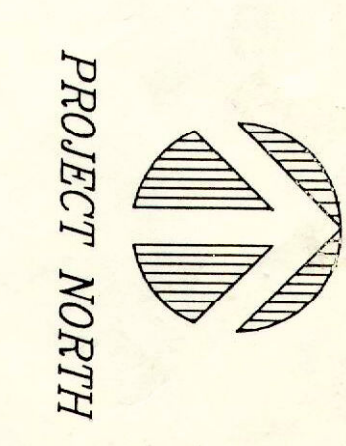
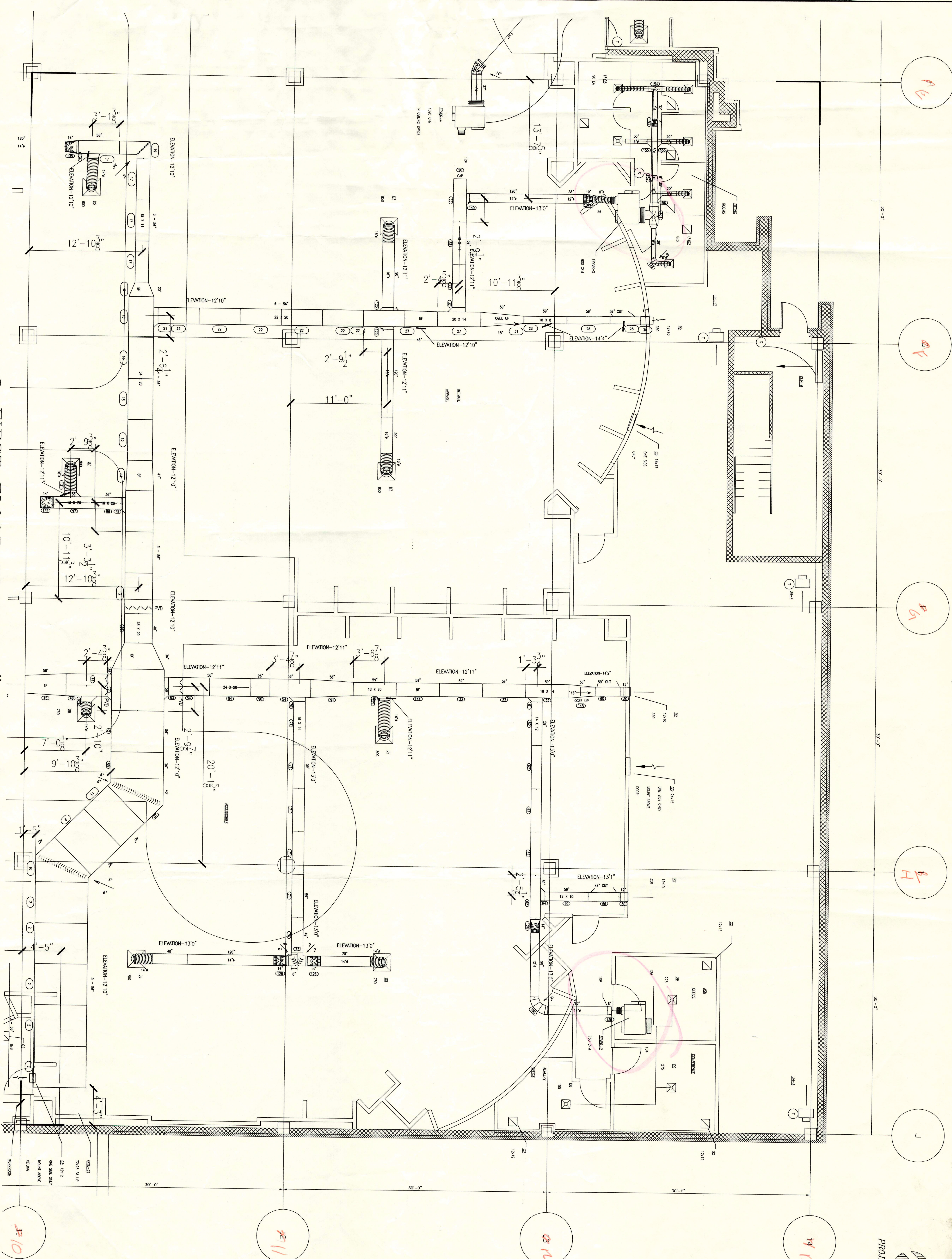


1988 by FHC, all rights reserved.
 It is authorized reproduction,
 or reuse, in whole or in part,
 by anyone other than FHC, without the
 express consent of FHC, Wyoming, WY.

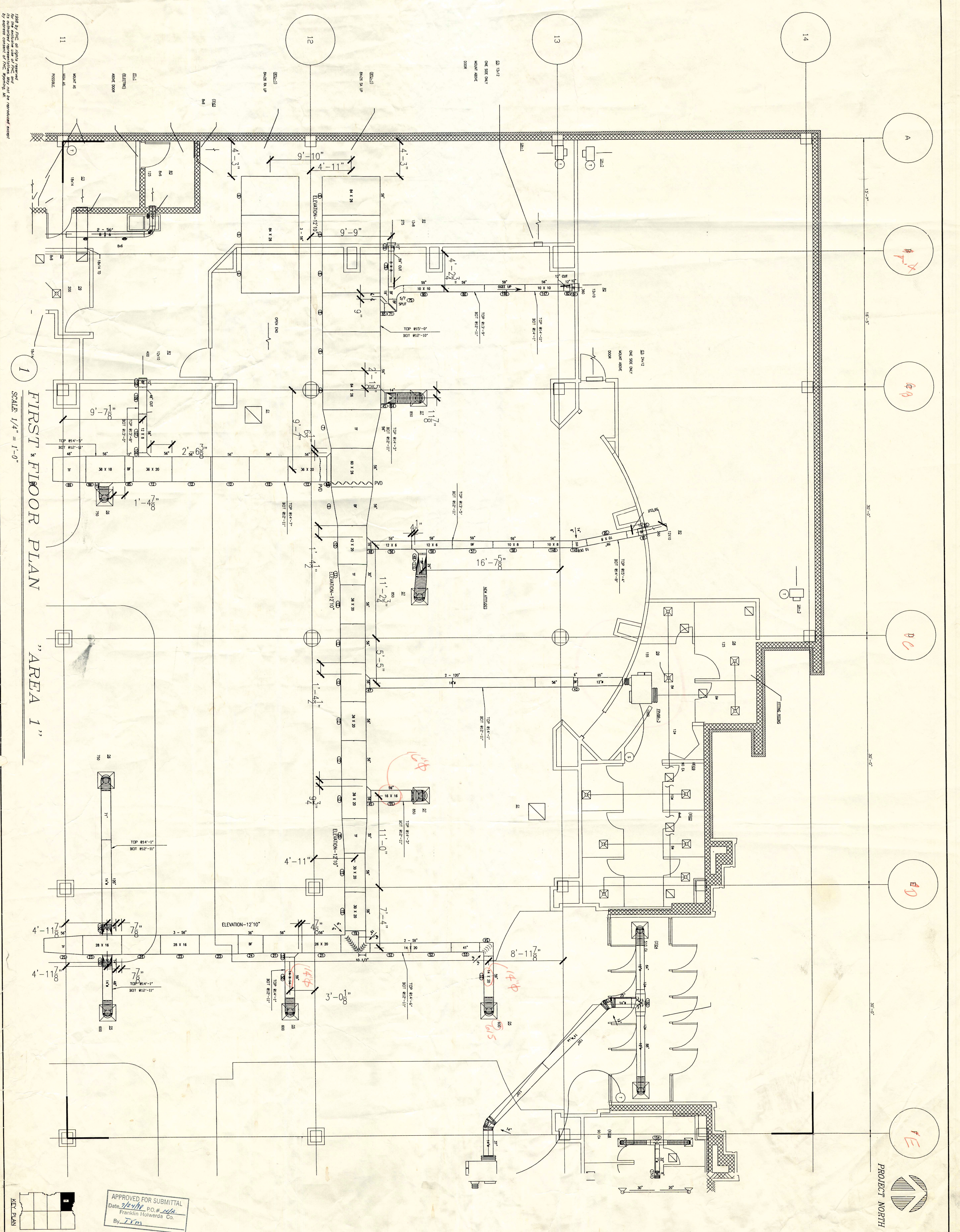
1 FIRST FLOOR PLAN
 SCALE 1/4" = 1'-0"
 "AREA 2"



FHC FRANKLIN HOLWERDA CO.
 • MECHANICAL • SHEET METAL • FIRE PROTECTION • SERVICE
 • 2509 29th St. SW, PO Box 9100 • Wyoming, MI 49509 • PHONE (616) 538-3231 • FAX (616) 538-2797

Project: HUDSON'S RIVERTOWN CROSSINGS
 GRANDVILLE, MICHIGAN

FHC Job No. #42783	Revision: M.L. 7/28/98
GREINER Job No. MIO2683	
Drawing By: Tony White	
Scale: 1/4" = 1'-0"	
Date: 7/20/98	
Plot File: VIEW 2	
CAD File: HUDSONS_APP2	
Sheet: HPP2	



11
12
13
14

A
B
C
D
E

1
SCALE 1/4" = 1'-0"

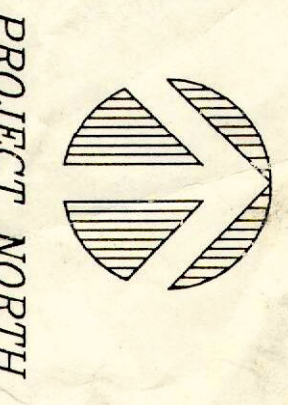
FIRST FLOOR PLAN
"AREA 1"

APPROVED FOR SUBMITTAL
Date 7/24/98 P.O. # 100
Franklin Holwerda Co.
By JLM

Sheet:	HPT2
Drawing By:	Tony White
Scale:	1/4" = 1'-0"
Date:	7/10/98
Plot File:	VIEW 1
Client:	HUDSON'S VAPOR
Revision:	11. Z182/98
Project No.:	# 42703
Owner:	GREENER-LOW WA
Address:	1102683

FHC FRANKLIN HOLWERDA CO.
MECHANICAL • SHEET METAL • FIRE PROTECTIVE • SERVICE
2305 29th St SW, PO Box 9100 - Wyoming, MI 49309 • PHONE (616) 538-3031 • FAX (616) 533-2797

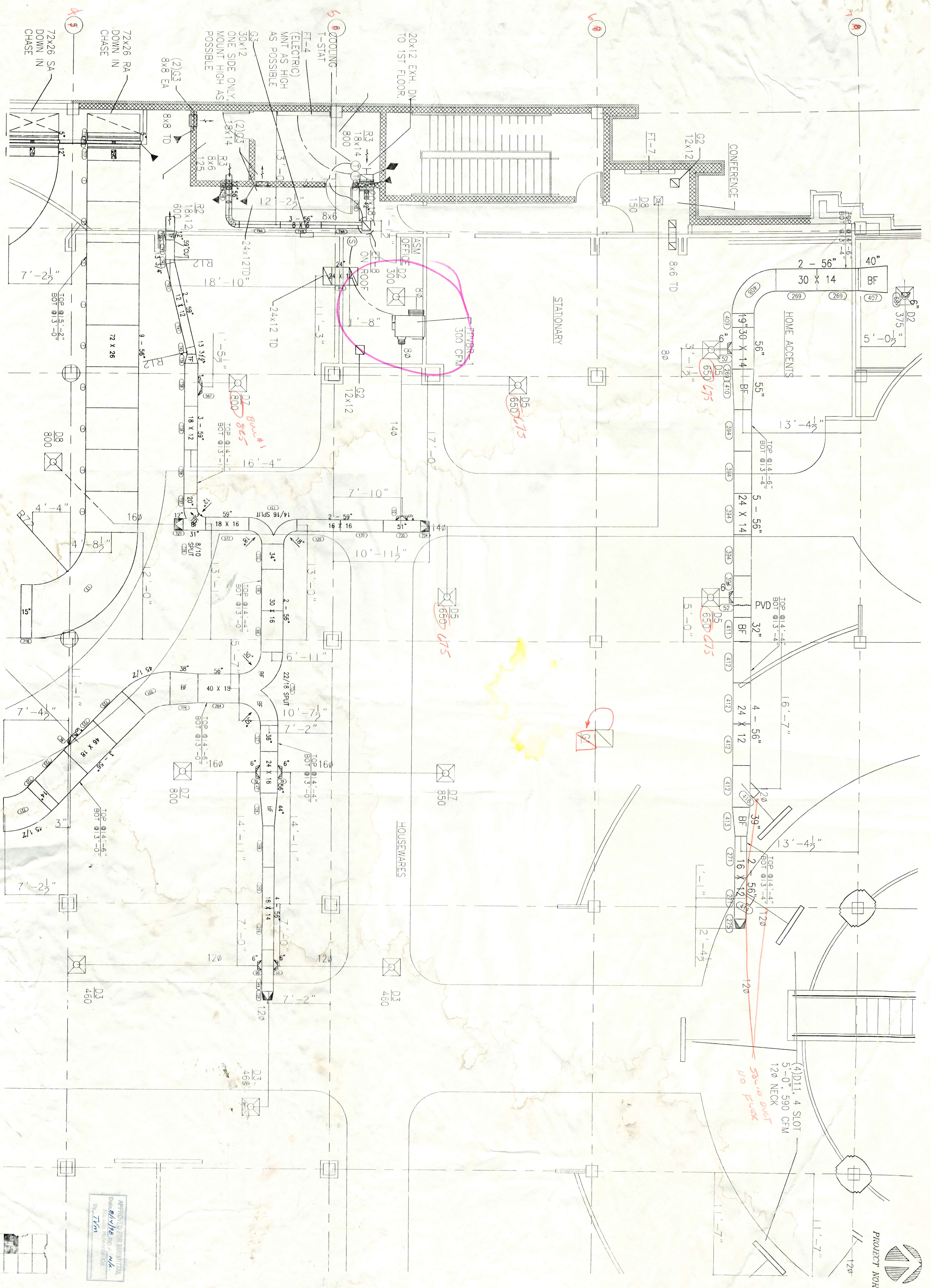
Project:
HUDSON'S RIVERTOWN CROSSINGS
GRANDVILLE, MICHIGAN



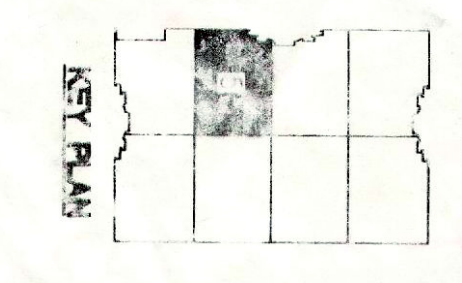
100% of FHC, its agents, employees, and its authorized representatives, shall not be held responsible for any errors or omissions on this drawing, in whole or in part, unless it is specifically stated otherwise.

1 SECOND FLOOR PLAN "AREA 5"

SCALE: 1/4" = 1'-0"



APPROVED FOR SUBMITTAL
 Date: 5/1/18 NO. N/A
 Franklin Holwerda Co.
 By: TVM

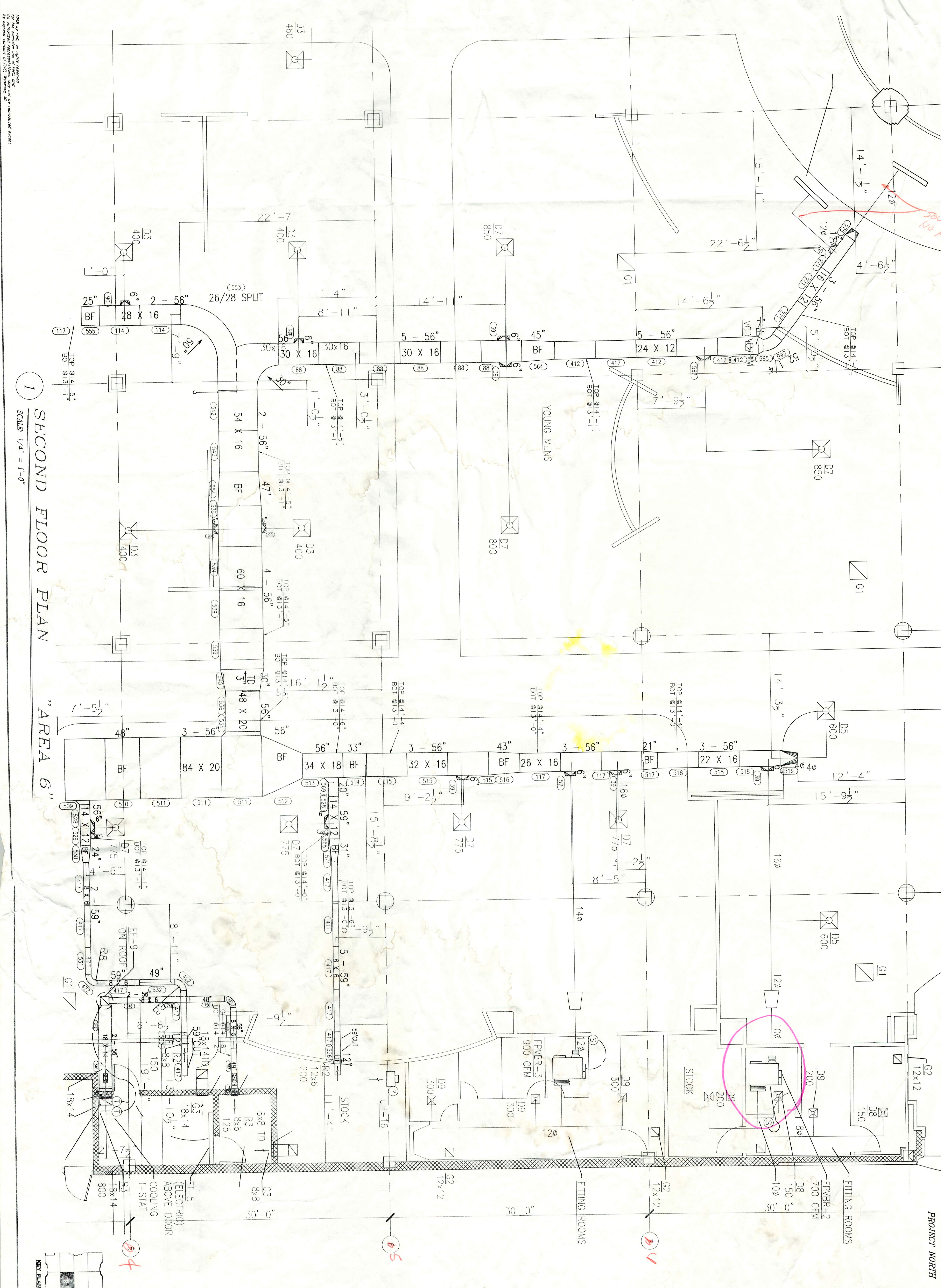


Project:
HUDSON'S RIVERTOWN CROSSINGS
 GRANDVILLE, MICHIGAN

Project:
HUDSON'S RIVERTOWN CROSSINGS
 GRANDVILLE, MICHIGAN

FHC FRANKLIN HOLWERDA CO.
 MECHANICAL • SHEET METAL • FIRE PROTECTION • SERVICE
 2909 23rd St SW, PO Box 9100 • Wyoming, MI 49559 • PHONE (616) 538-3231 • FAX (616) 538-2177

Project:
HUDSON'S RIVERTOWN CROSSINGS
 GRANDVILLE, MICHIGAN



1 SECOND FLOOR PLAN
SCALE: 1/4" = 1'-0"

"AREA 6"

PROJECT NORTH

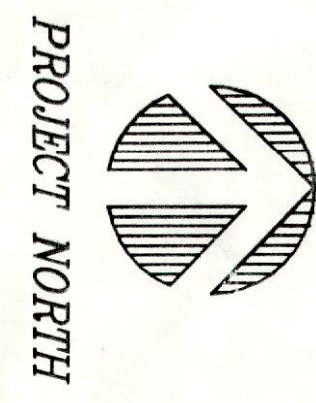
REV	DATE	DESCRIPTION
HPF2		

Drawn by	John White
Scale	1/4" = 1'-0"
Date	8/7/98
Field File	
View	0
CAD File	HUDSONS2.HPF2

FHC Job No.	#42783
PREPARED BY	NOV 20 1998
REVISION:	

FHC FRANKLIN HOLWERDA CO.
 • MECHANICAL • SHEET METAL • FIRE PROTECTION • SERVICE
 • 2309 29th St. SW, PO Box 5100 • Wyoming, MI 49529 • PHONE (616) 538-5231 • FAX (616) 538-2797

Project:
HUDSON'S RIVERTOWN CROSSING
 GRANDVILLE, MICHIGAN



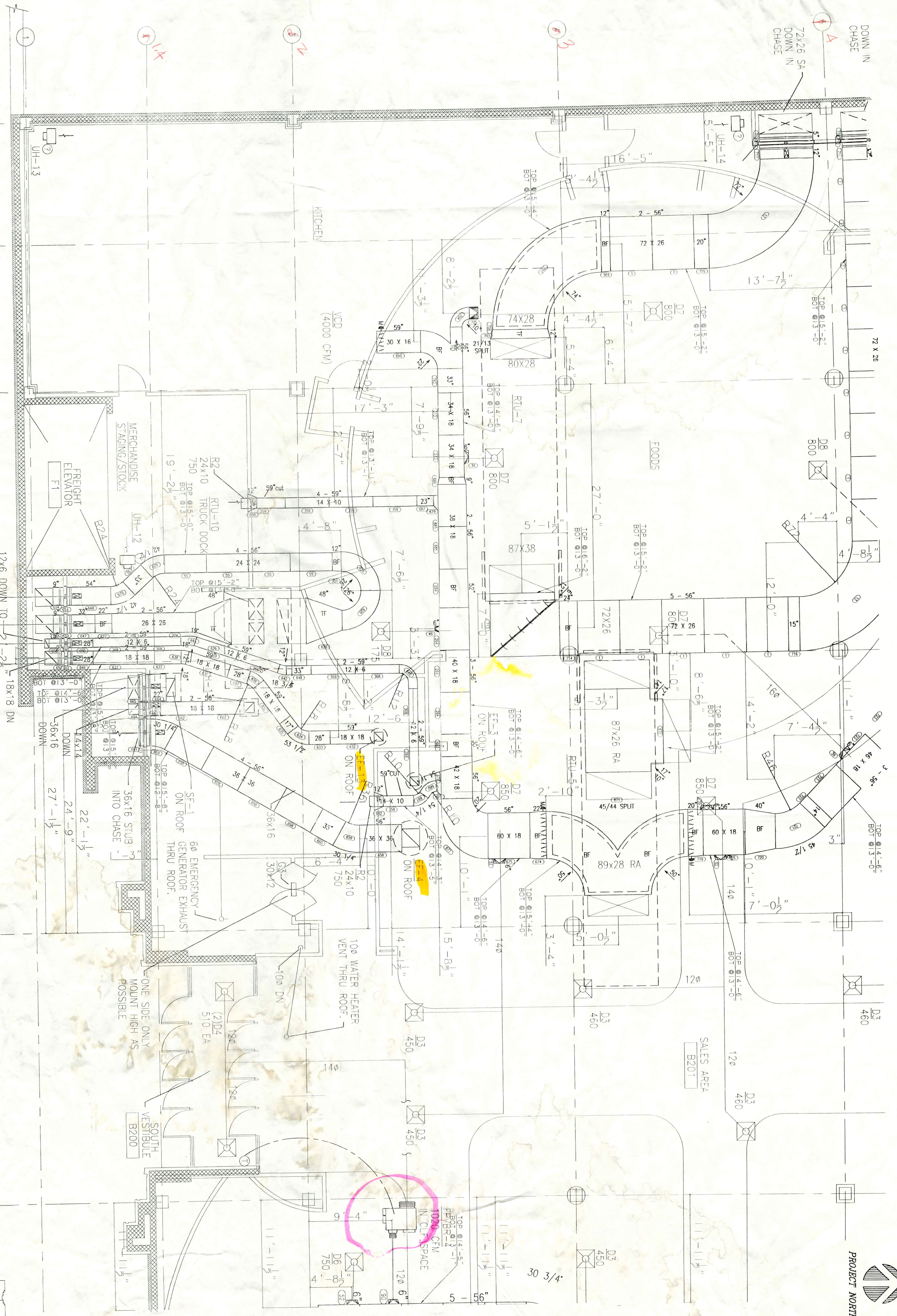
Project:
HUDSON'S RIVERTOWN CROSSINGS
 GRANDVILLE, MICHIGAN

FHC FRANKLIN HOLWERDA CO.
 MECHANICAL • SHEET METAL • FIRE PROTECTION • SERVICE
 2509 29th St SW, PO Box 9100 • Wyoming, MI 48099 • PHONE (616) 538-3231 • FAX (616) 538-2797

FHC Job No.
#42783
 GREINER Job No.
M102683
 Revision:

Drawing By
 Tony White
 Scale:
1/4" = 1'-0"
 Date:
 8/7/98
 Plot File:
 VIEW 7
 CAD File:
 HUDSONS2.VHP2

Sheet:
HPF2



SECOND FLOOR PLAN
 SCALE: 1/4" = 1'-0"
 "AREA"

100% by FHC of all drawings
 for the exclusive use of FHC and its
 authorized representatives. No other
 reproduction or distribution is
 permitted without the written
 consent of FHC.