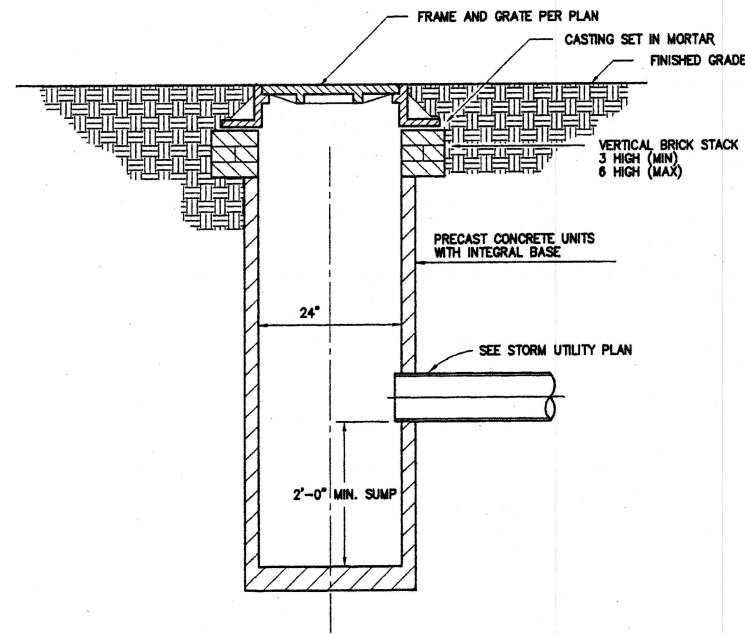


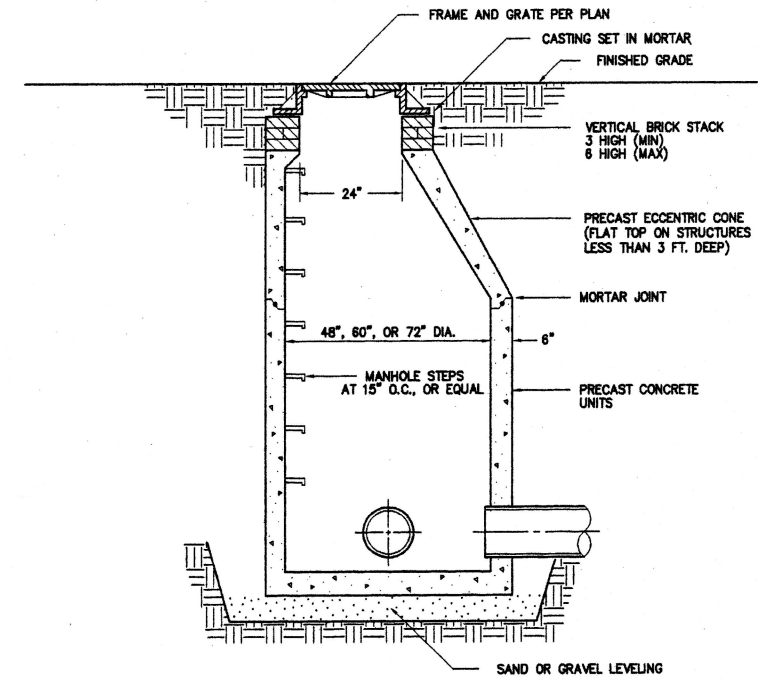
**CATCH BASIN DETAIL (CB & CCB)**

NO SCALE



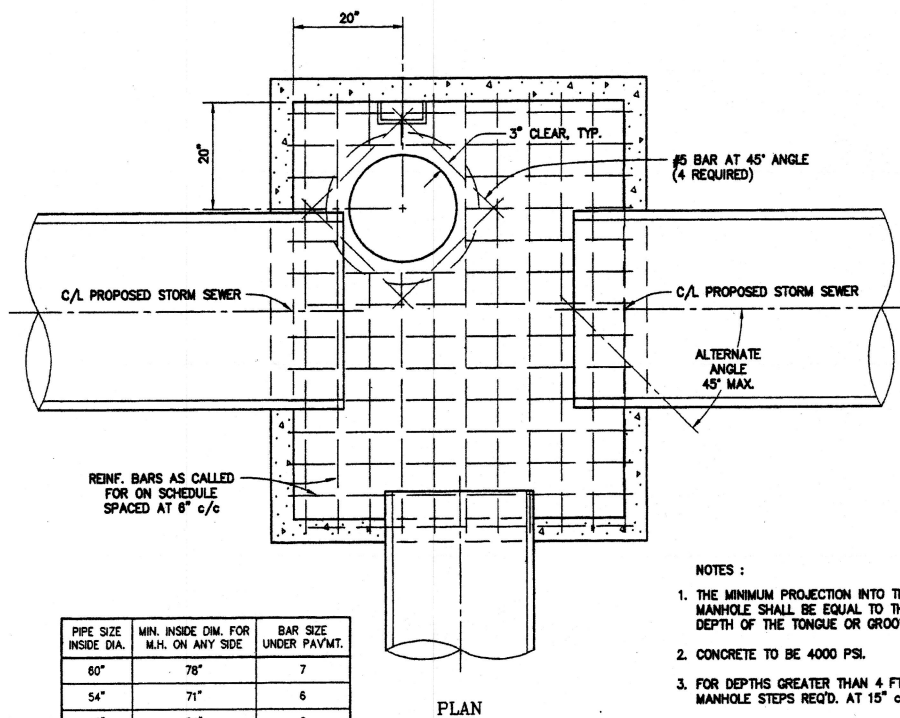
**2 FT. DIA. CATCH BASIN**

NO SCALE



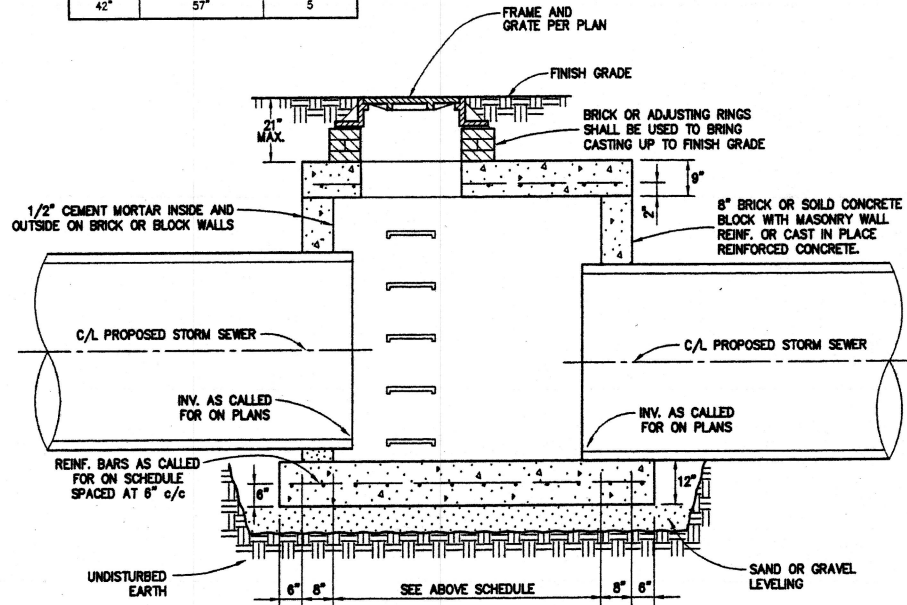
**STORM MANHOLE DETAIL**

NO SCALE



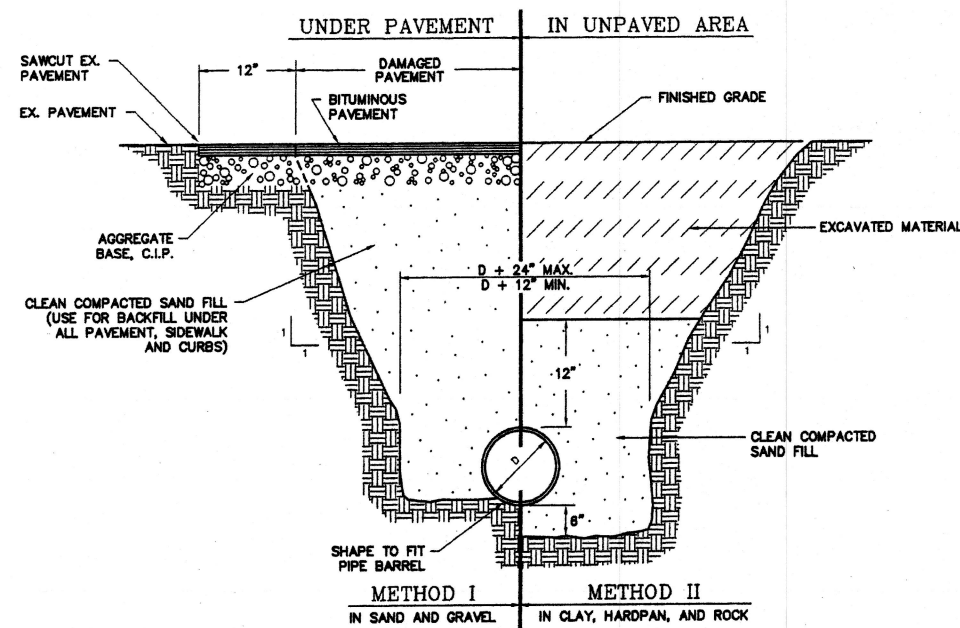
PIPE SIZE INSIDE DIA.	MIN. INSIDE DIM. FOR M.W. OR ANY SID.	BAR SIZE UNDER PAYMNT.
60"	76"	7
54"	71"	6
48"	64"	6
42"	57"	5

- NOTES:
1. THE MINIMUM PROJECTION INTO THE MANHOLE SHALL BE EQUAL TO THE DEPTH OF THE TONGUE OR GROOVE.
  2. CONCRETE TO BE 4000 PSL.
  3. FOR DEPTHS GREATER THAN 4 FT. MANHOLE STEPS REQ'D. AT 15" c/c



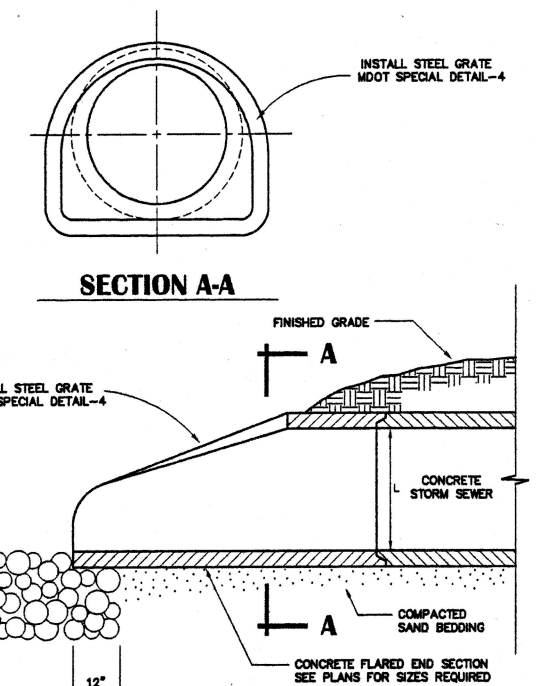
**STORM MANHOLE DETAIL**

NO SCALE



**TRENCH DETAIL**

NO SCALE



**STORM SEWER OUTLET DETAIL**

NO SCALE

site storm  
utility details

SCALE: NONE

1000 RiverTown Dr. Ste. 200  
Ann Arbor, MI 48106-3007  
Phone: 734-769-1100  
Fax: 734-769-1103



By: \_\_\_\_\_  
Date: \_\_\_\_\_

Drawn By: \_\_\_\_\_  
Checked By: DAC/TDH  
Date: 02-06-98  
Scale: AS NOTED

Location: PART OF THE E 1/2 OF  
89 OF EMMONSVILLE, CITY OF YOWING  
KENT COUNTY, MICHIGAN

**SITE STORM UTILITY DETAILS**  
RiverTown Crossings

Sheet Title: \_\_\_\_\_  
Project: \_\_\_\_\_

Project No. 98300.03  
Sheet 23 of 36

ISSUED FOR CONSTRUCTION : 2-6-98